



**Unique:  
With glass fibre composite  
material**

The low thermal conductivity of the glass fibre reinforcement makes Schöck Isokorb® CXT the best thermal insulation element on the market.

SCHÖCK ISOKORB® CXT

**For best insulated  
balcony connections.**



Load bearing thermal insulation elements for effective reduction of thermal bridges on cantilevered components such as balconies, access balconies and canopies.

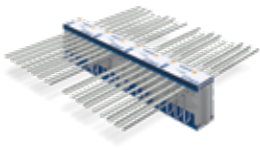
THE COMBINATION OF THE FUTURE

# Proven safety with top-quality properties.

The requirements relating to insulating buildings have increased significantly in recent years due to energy-related regulations. Thermal bridges are therefore becoming more and more important. The solution: Schöck Isokorb® CXT.

**Schöck Isokorb® CXT closes structural thermal bridges:**

Free cantilevered and supported reinforced concrete or steel balconies / access balconies / parapets / reinforced concrete canopies



**The best of both worlds - in just one product**

Schöck Isokorb® CXT has an enviable international reputation as a load-bearing thermal insulation element in different construction projects due to its excellent fatigue resistance, deformation and vibration behavior properties. The use of glass fibre composite tension rods adds outstanding thermal insulation as a further impressive feature.

**The thermal insulation benchmark for your next projects**

Making compromises with thermal bridges is a thing of the past. Smart use of glass fibre reinforcement makes Schöck Isokorb® CXT the best thermal insulation element on the market. Durable, high-strength and economical – all benefits which can be used in any building project to combine energy-efficient building with maximum design versatility.



Photo: Moritz Bernouilly



## Product benefits

### Optimum thermal insulation

By using glass fibre composite material

### Certified quality

Component certification from the Passive House Institute and EPD Environmental Product Declaration.

### All-round safety

With construction authority accreditation, type approval and fire protection classification

### Easy to use

Extremely light and compact for easy installation

### Better life cycle assessment

Up to 27% better life cycle assessment (CO<sub>2</sub> emissions) in the manufacture of the product

### Versatile combination options with the product range

Can be easily combined with other products in the Isokorb® XT range



EASY TO USE AND HANDLE

## Extremely light and compact.

The use of glass fibre material instead of steel not only provides thermal insulation benefits but also makes Schöck Isokorb® CXT much easier to use.



With steel reinforcement



With glass fibre composite material reinforcement

### More compact, lighter and easier to use

The shorter tension rods in Schöck Isokorb® CXT means the rod projection is up to 27 cm less. This not only avoids time-consuming and expensive special transportation but the weight, which is up to 30 per cent less, makes installation even easier, even for larger load bearing levels in prefabricated constructions or on site.



### Versatile combination options with the product range

With Schöck, everything works together. This means that Schöck Isokorb® CXT can be easily combined with other Isokorb® XT products, giving you the optimum solution for every task.

### In practice

Find out more about Schöck Isokorb® CXT in this installation video.  
[www.schoeck.com/isokorb-cxt-video/en](http://www.schoeck.com/isokorb-cxt-video/en)



SCHÖCK COMBAR® – OUTSTANDING PERFORMANCE

# Glass fibre composite material: Tried-and-tested, innovative solutions.



## Minimum thermal conductivity

With a thermal conductivity of just  $\leq 0.9$  W/(m.K), Schöck Combar® conducts almost no heat.



## Durable high-strength material

The high fibre content and the parallel layout produce maximum strength and stiffness – tested for a service life of 100 years.



## Easily machinable

Easy to machine, for example when trimming, and significantly less expensive than machining steel.

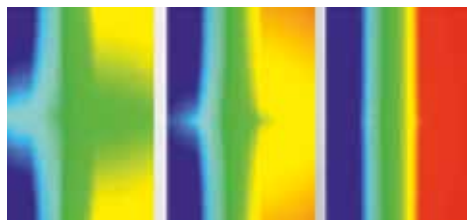


## Chemically resistant

Long-term resistance to alkali: Carbonation or de-icing salt do not lead to corrosion or other damage.

### Perfect combination with concrete

High quality glass fibre composite materials are a convincing solution and produce light, strong, robust and durable components when combined with concrete.



The thermal image shows the predominant the thermal conduction: Left carbon steel, center stainless steel, right glass fibre composite material

## A unique reinforcement with unrivaled properties

Schöck Combar® is a reinforcing bar made from corrosion-resistant glass fibres bonded to a vinyl ester. Significantly lighter than steel and neither magnetic nor magnetizable, it is the perfect solution for high-quality reinforcements.



COMPREHENSIVE EXPERTISE

## Dependably the right solution.

With forward-looking product solutions and systems, we fulfill the structural, static and design requirements for various building components and applications in new and existing buildings. Our focus lies in particular on the reduction of thermal bridges, impact sound insulation and reinforcement technology.

Balcony, access balcony  
and canopy



Walls and columns



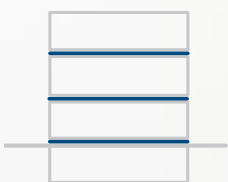
Roof superstructure



Façade



Slab



Stairs



Schöck Bauteile GmbH  
Vimbucher Strasse 2  
76534 Baden-Baden, Germany  
Telephone: +49 7223 967 144  
export@schoeck.com  
www.schoeck.com